

# Halo

---

100% RECYCLABLE STOOL COLLECTION

**ELITE OFFICE FURNITURE UK LIMITED**

Goole Office, Showroom & Factory

Elite Road  
Goole  
East Yorkshire  
DN14 8BF  
United Kingdom

Tel. +44 (0)1405 746000

Email. [sales@elite-furniture.co.uk](mailto:sales@elite-furniture.co.uk)  
[www.elite-furniture.co.uk](http://www.elite-furniture.co.uk)

**London Office & Showroom**

81-87 St John Street  
Clerkenwell  
London  
EC1M 4NQ  
United Kingdom

Tel. +44 (0)20 7490 4909

Email. [londonshowroom@elite-furniture.co.uk](mailto:londonshowroom@elite-furniture.co.uk)



## Halo Stool Collection.

Designed in Padua, Italy, Halo delivers a joyful stool, blending aesthetics and technique to create an exciting solution suited to the modern workplace. With a choice of six colour finishes and two height variations, these stools were thoughtfully designed to bring an exciting pop of colour to any environment.



## Halo Low Stool.

---



**Dark Grey Shell Low Stool.**

Code: HALSTL/DG



**Blue Shell Low Stool.**

Code: HALSTL/BU



**Green Shell Low Stool.**

Code: HALSTL/GN



**Red Shell Low Stool.**

Code: HALSTL/RD



**White Shell Low Stool.**

Code: HALSTL/WH



**Yellow Shell Low Stool.**

Code: HALSTL/YE



Halo High Stool.



**Dark Grey Shell High Stool.**

Code: HALSTH/DG



**Blue Shell High Stool.**

Code: HALSTH/BU



**Green Shell High Stool.**

Code: HALSTH/GN



**Red Shell High Stool.**

Code: HALSTH/RD



**White Shell High Stool.**

Code: HALSTH/WH



**Yellow Shell High Stool.**

Code: HALSTH/YE

## Fabric Choices.

We align ourselves with the leading fabric manufacturers with more than 150 core ranges including Camira, Panaz, Kvadrat and Svensson, incorporating their most responsible ranges with Oeko-Tex® Standard 100, Indoor Advantage™ Gold, EU Ecolabel and Cradle to Cradle™ certifications.

We have a full collection of metalwork colours and fabric swatches available to view within our showroom facilities, alongside our furniture products.

Each seat pad is hand crafted by our highly skilled upholstery team.



## Colour & Finish Options

### Shell Colour Options.



Blue  
RAL 5009



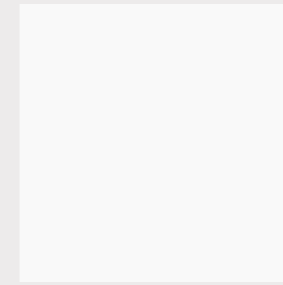
Dark Grey  
RAL 7011



Green  
Pantone 17-6212



Red  
Pantone 17-1532



White  
RAL 9016

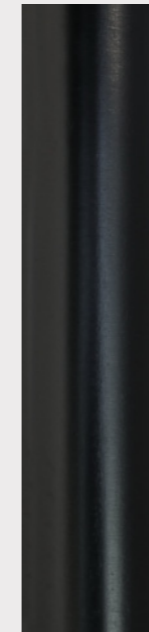


Yellow  
Pantone 17-0839

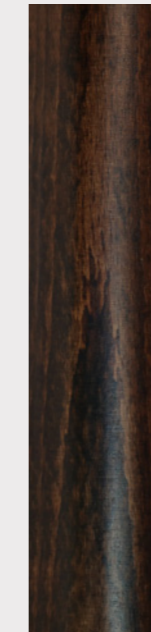
### Frame Finishes.



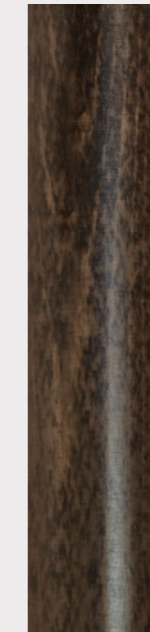
Beech



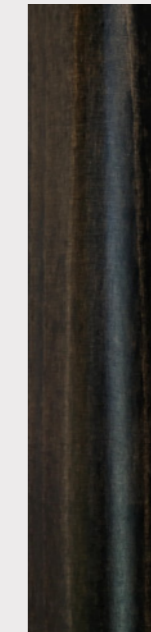
Stained Black



Stained Espresso



Stained Walnut

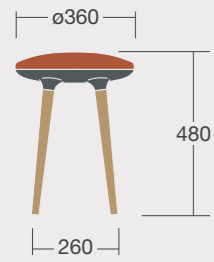


Stained Wenge



White

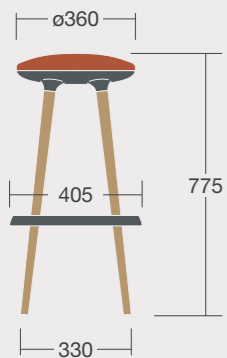
## Dimensions.



### Low Stool with Wooden Frame and Upholstered Seat.

Code: HALSTL

Overall Size: 360mm w x 360mm d x 480mm h.



### High Stool with Wooden Frame and Upholstered Seat.

Code: HALSTH

Overall Size: 405mm w x 405mm d x 775mm h.

## Recyclable Content.

The Halo stool collection is 100% recyclable due to the diligence applied during the material selection process.

Seat Shell	Plastic (Nylon)	100% Recyclable.
Footrest	Plastic (Nylon)	100% Recyclable.
Seat Pad Structure	Plastic (ABS)	100% Recyclable.
Seat Foam	Foam	100% Recyclable.
Seat Fabric	Fabric	100% Recyclable.
Leg Frames	Steamed Beech	100% Recyclable.
Glides	Plastic (Nylon)	100% Recyclable.
Fixings and Fittings	Steel	100% Recyclable.



## Our Plastic Awareness Policy.

We adhere to our Circular Economy business model that aims to deliver 100% recyclability.

The use of recycled plastic in place of virgin resin typically results in reduced energy consumption, lower cost, and reduced environmental impact.

Our Halo product permits all plastic components to be recycled through curbside programs. The following illustrates what type of plastic is used and its recyclable properties.

WHAT WE USE	RESIN TYPE	RESIN ID CODE
<b>Halo Construction:</b>		
Seat Shell.	Polyamide (Nylon) + 30 GF (Glass Filled).	(PA)
Footrest.	Polyamide (Nylon) + 30 GF (Glass Filled).	(PA)
Seat Pad Structure.	Acrylonitrile Butadiene Styrene.	(ABS) 9
Feet.	Polycaprolactam - Polyamide 6 (Nylon Type 6).	(PA6)
Seat Foam.	Polyurethane.	(PUR) 113
<b>Packaging Materials:</b>		
Bags.	Low Density Polythene.	(LDPE) 4



### Low Density Polythene (LDPE)

LDPE is not often recycled through curbside programs, but some communities will accept it.



### Acrylonitrile-Butadiene-Styrene (ABS)

ABS is recycled by first shredding used plastics to produce shredded plastics. After this step, metals and undesirable plastics are separated from the shredded plastics to produce separated plastics.



### Polyurethane (PUR)

Polyurethane is recycled in two primary ways: mechanical recycling, in which the material is reused in its polymer form, and chemical recycling that takes the material back to its various chemical constituents.



### Polyamide (PA)

Polyamide is 100% mechanically and feedstock recyclable. Recycled content is made into new product formulations. This is a mixed plastic made up of many polymers.

## Sourced Timber

Our Halo solid timber frames are carefully sourced from managed forests through the FSC accreditation, and no timber is sourced or used by Elite anywhere outside of this framework.

Due to the natural nature of timber, all grains and tones are individual; therefore, no two timber frames will be alike.

We adhere to keep these tones very close by the regulated use of wood stains used.



# Accreditations and Achievements

## Company Accreditations

BS EN ISO 9001:2015  
Quality Management Systems.

BS EN ISO 14001:2015  
Environmental Management Systems.

BS OHSAS 45001:2018  
Occupational Health & Safety Management.

BS EN ISO 50001:2011  
Energy Management Systems.

FISP  
Furniture Industry Sustainability Programme.  
As part of our Environmental Policy.

FSC  
Forest Stewardship Council.  
Chain of Custody Certification.

FIRA  
Furniture Industry Research Association.  
Affiliated Member.

CIUK  
Commercial Interiors UK (formerly the BCFA).  
Affiliated Member.

Valpak  
The Producer Responsibility Obligations Regulations.  
(Packaging Waste).

FORS (Bronze Award)  
The Fleet Operator Recognition Scheme.

RHA  
Road Haulage Association.  
Affiliated Member.

## Furniture Accreditations

BS EN 527-1:2011  
Office furniture desking dimensions.

BS EN 527-2:2002  
Office furniture desking mechanical safety requirements.

BS EN 527-3:2003  
Office furniture desking strength & stability.

BS EN ISO 9241-5:1999  
Ergonomics of VDU/TFT screen usage within offices.

BS 4875-7:2006  
Strength & stability of shelving.  
Test level 4 (shelves only).

BS 6396:2008  
Office furniture desking electrical systems.

BS EN 13722:2004  
Gloss/reflective level testing on furniture surfaces.

BS EN 14073-2:2004  
Strength & rigidity testing of storage furniture part 2.

BS EN 14073-3:2004  
Strength & rigidity testing of storage furniture part 3.

BS EN 14074:2004  
Endurance & stability testing of storage furniture.

BS EN 14322:2017  
Definition, requirements & classification of wood based panels.  
(Elite Dual Board).

BS EN 15372:2008 level 2  
Standard and folding tables structurally suitable and stable for  
general contract use.

UNE-EN 14323:2004  
Dual Board resistance to scratching, cracking and staining.

## Dividing Screen Accreditations

BS 476-7:1987  
Flammability test for Screens (Class 2).

BS EN 1023-1:1997  
Office furniture screens, dimensions.

BS EN 1023-2:2000  
Office furniture screens, mechanical safety requirements.

BS EN 1023-3:2000  
Office furniture screens, test methods.

BS EN 9241-5  
Gloss Level - surface reflectance (Screens).

EN 13501-1:2007+A1:2009  
Fire classification of construction products and building  
elements. Part 1.

BS EN 13823:2010+A1:2014  
Reaction to fire tests for building products. Building products  
excluding floorings exposed to the thermal attack by a single  
burning item.

BS EN ISO 11925-2:2010  
Reaction to fire tests. Ignitability of products subjected to direct  
impingement of flame. Single-flame source test.

BS EN ISO 1182:2002  
Reaction to fire tests for building products. Non-combustibility  
test.

BS EN ISO 1716:2018  
Reaction to fire tests for products. Determination of the gross  
heat of combustion (calorific value).

BS EN 12667:2001  
Thermal performance of building materials and products.  
Determination of thermal resistance by means of guarded hot  
plate and heat flow meter methods. Products of high and  
medium thermal resistance.

## Seating Accreditations

BS EN 1022:2015 & 2020  
Seating, determination of stability.

BS EN 1335-1 + BS EN 1335-2 + BS EN 1335-3  
Office work chairs safety test methods.

EN 1728:2012 + AC:2013  
Seat & Back Static Load Test & Durability.  
Front & Back Fatigue Test & Impact Test.

BS EN 5852 Part 2: 1982  
Ignition source 5 (Crib 5) Fire Retardancy.  
CentiPUR certified foam.

BS EN 5459-2: 2000+A2:2008  
Office seating for use by person weighing up to 150kg and  
for use upto 24 hours a day.

BS EN 13761:2002  
Visitor Chairs - Dimensions & Safety Requirements.

BS EN 15373:2007 level 2  
Seating strength, durability and safety.  
Requirements for non-domestic seating.

BS EN 16139:2015  
4 legged & cantilever seating, strength, durability  
and safety requirements.

EN 1728/2000 & 2015  
Domestic furniture. Seating. Test methods for the determi-  
nation of strength and durability.

BS EN 10025:1993  
Specification for hot rolled products of non-alloy structural  
steels and their technical delivery conditions.  
Applicable to all chrome plated parts.

ANSI/BIFMA X5.1-2002  
International testing certificate for office chairs.  
Sections:08,11,13,14,16 and 18.

ANSI/BIFMA X5.1-2011  
International testing certificate for office chairs.  
Sections:05,11.3,13,14 and 15.

TUV Eco-Circle 2008  
Tested for recyclable content, harmful substances, energy  
saving & ergonomic design.

NEOCON  
Silver Award Winner 2013 Chicago, USA.

